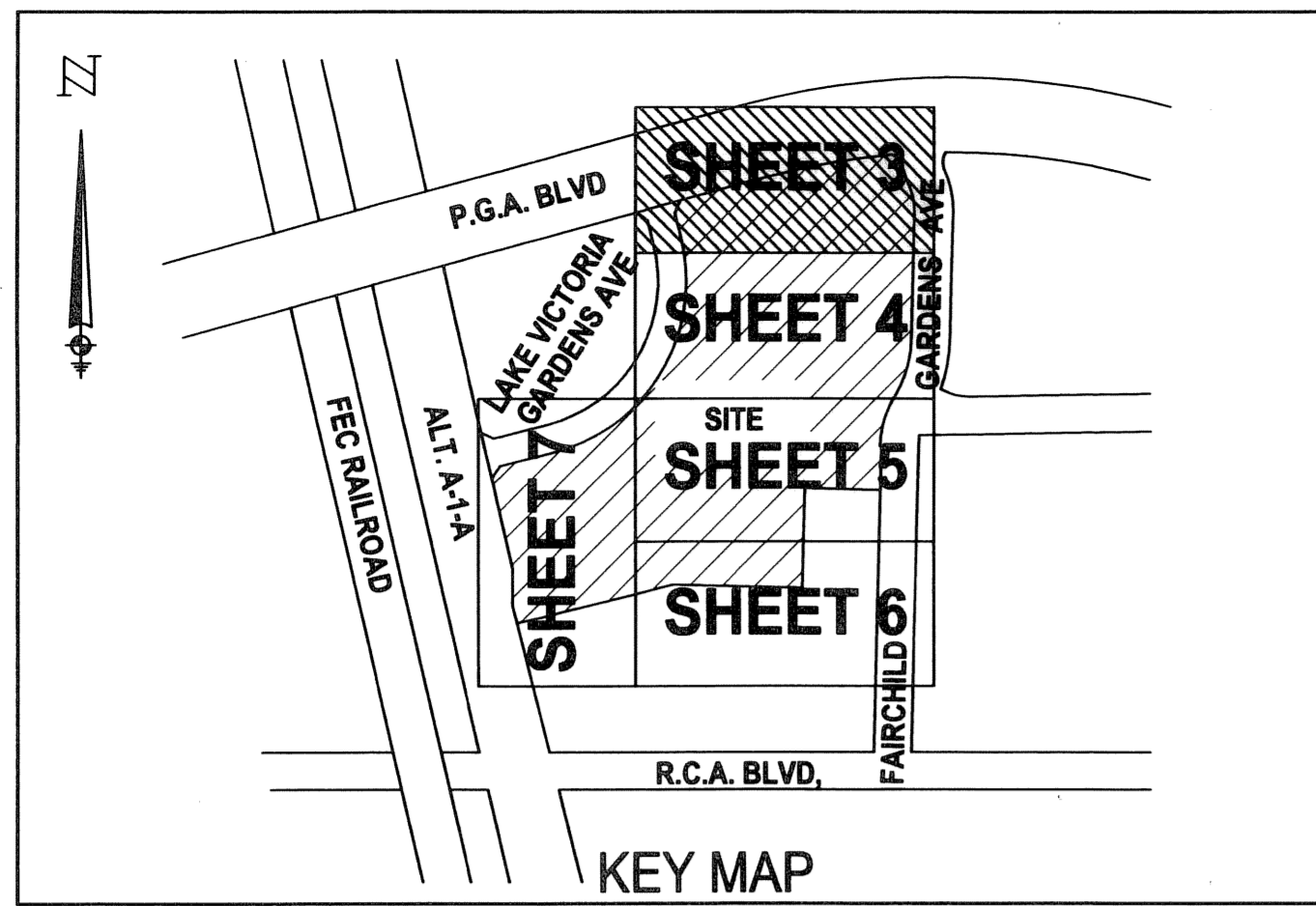
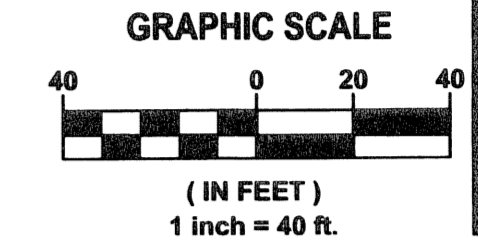


LEGACY PLACE COMMERCIAL

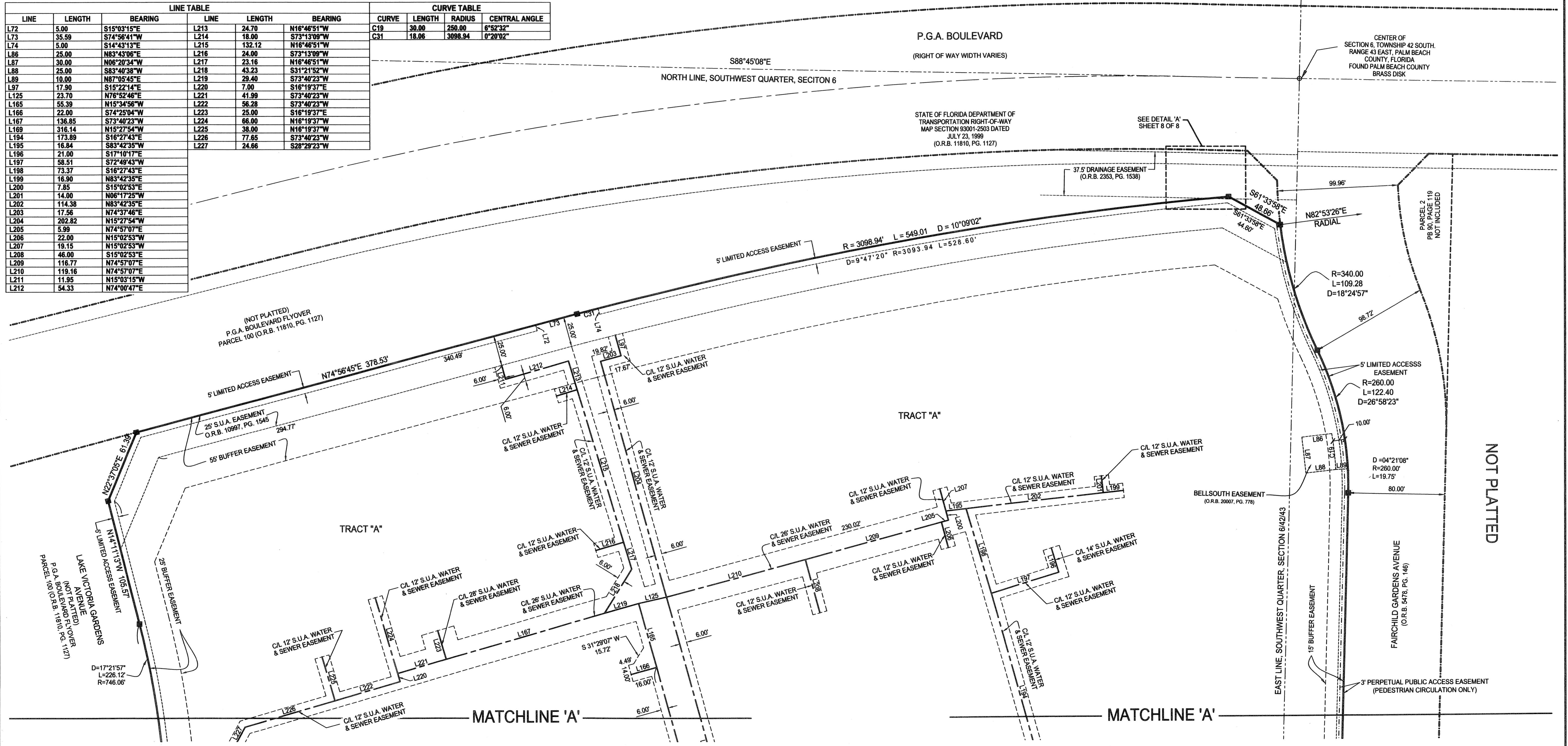
BEING A REPLAT OF A PORTION OF PARCEL 1, LEGACY PLACE, AS RECORDED IN
 PLAT BOOK 90, PAGES 119 THROUGH 121, PUBLIC RECORDS OF PALM BEACH COUNTY, FLORIDA
 LYING IN SECTION 6, TOWNSHIP 42 SOUTH, RANGE 43 EAST
 CITY OF PALM BEACH GARDENS, PALM BEACH COUNTY, FLORIDA
 SHEET 3 OF 8 JULY, 2006

31

STATE OF FLORIDA
 COUNTY OF PALM BEACH
 This plat was filed for
 record at _____ M. this day
 of _____, 2006 and duly
 recorded in Plat Book No. _____
 on Pages _____ thru _____
 Sharon R. Bock
 Clerk and Comptroller
 By _____ D.C.



LINE TABLE			CURVE TABLE						
LINE	LENGTH	BEARING	LINE	LENGTH	BEARING	CURVE	LENGTH	RADIUS	CENTRAL ANGLE
L72	5.00	S15°03'15"E	L213	24.70	N16°46'51"W	C19	30.00	250.00	6°52'32"
L73	35.59	S74°56'41"W	L214	18.00	S73°13'09"W	C31	18.06	3098.94	0°20'02"
L74	5.00	S14°43'13"E	L215	132.12	N16°46'51"W				
L86	25.00	N83°43'06"E	L216	24.00	S73°13'09"W				
L87	30.00	N06°20'34"W	L217	23.16	N16°46'51"W				
L88	25.00	S83°40'38"W	L218	43.23	S31°21'52"W				
L89	10.00	N87°05'45"E	L219	29.40	S73°40'23"W				
L97	17.90	S15°22'14"E	L220	7.00	S16°19'37"E				
L125	23.70	N76°52'46"E	L221	41.99	S73°40'23"W				
L165	55.39	N15°34'56"W	L222	58.28	S73°40'23"W				
L166	22.00	S74°25'04"W	L223	25.00	S16°19'37"E				
L167	136.85	S73°40'23"W	L224	66.00	N16°19'37"W				
L169	316.14	N15°27'54"W	L225	38.00	N16°19'37"W				
L194	173.89	S16°27'43"E	L226	77.65	S73°40'23"W				
L195	16.84	S83°42'35"W	L227	24.66	S28°29'23"W				
L196	21.00	S17°10'17"E							
L197	58.51	S72°49'43"W							
L198	73.37	S16°27'43"E							
L199	16.90	N83°42'35"E							
L200	7.85	S15°02'53"E							
L201	14.00	N06°17'25"W							
L202	114.38	N83°42'35"E							
L203	17.56	N74°37'46"E							
L204	202.82	N15°27'54"W							
L205	5.99	N74°57'07"E							
L206	22.00	N15°02'53"W							
L207	19.15	N15°02'53"W							
L208	46.00	S15°02'53"E							
L209	116.77	N74°57'07"E							
L210	119.16	N74°57'07"E							
L211	11.95	N15°03'15"W							
L212	54.33	N74°00'47"E							



LIDBERG LAND SURVEYING, INC.
 675 West Indiantown Road, Suite 200, Jupiter, Florida 33458 TEL 561-746-8454

CAD K:\AUTOCAD2000\064243100-154-SEMBLER\DWG\00-154-306.DWG			
REF			
FLD		FB.	PG.
OFF	S.F.B.		JOB 00-154 (306)
			DATE 02/03/2006
CKD	D.C.L.	SHEET 3 OF 8	DWG 00-154P